



**Casa Grande
High School**

It's a Great Day to Be a Gaucho!



Freshman Parent Orientation

August 7, 2023

CGHS Administrative Team



Graduate Profile

Upon graduation, all Casa Grande students will be **Broadly Literate, Civically Engaged, Highly Employable**, and have a **Personal Vision** for their future.

Broad Literacy

I am a Casa Grande graduate, and I am **Broadly Literate**. I am a critical thinker, a problem-solver, and an effective communicator across disciplines. I can write, speak, and read well. I ask informed questions, I can evaluate the credibility of a claim, and I can empathize with and appreciate multiple points of view.

Civic Engagement

I'm a Casa Grande graduate, and I am **Civically Engaged**. I actively participate in my community and I am committed to making a positive impact. I stay informed, I respect a diversity of views, I participate in the political process, and I understand my rights and the rights of others. I understand how the choices I make have a personal, local, and global impact.

Highly Employable

I'm a Casa Grande graduate, and I am **Highly Employable**. I have the skills, the attitude and the work-ethic to be a success in the workplace. I am a self-starter, I am reliable, flexible and punctual, and I have integrity. I present and dress professionally in the workplace.

Personal Vision

I'm a Casa Grande graduate, and I have a **Personal Vision**. I have goals and dreams and I am a lifelong learner. I maintain a healthy lifestyle, I am resilient and self-motivated. I am willing to take risks and I can navigate pathways to post-secondary education and career choices.

Gauchos RISE



**CASA GRANDE
HIGH SCHOOL**
Home of the Gauchos

RESPECT

INTEGRITY

SAFETY

ENGAGEMENT



**CASA GRANDE
HIGH SCHOOL**
Home of the Gauchos

R

We show **RESPECT** at Casa Grande by:

- Using professional and academic language
- Following instructions from staff on campus
- Being kind and cordial

I

We show **INTEGRITY** at Casa Grande by:

- Being honest about your actions, choices, and words
- Being accountable
- Using our time wisely

S

We show **SAFETY** in the classroom by:

- Keeping hands and feet to yourself
- Being aware of the safety plans and evacuation routes
- If you see/hear something unsafe, report to an adult
- Being kind and welcoming to others

E

We show **ENGAGEMENT** in the classroom by:

- Being on time, ready to learn when the bell rings
- Advocating for our own personal needs by communicating with our teachers, counselors, admin, and other adults on campus

BOOSTERS

[Link to Video](#)



School Counselors/Consejeros Escolares



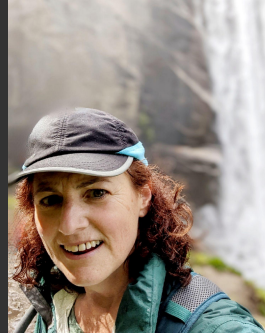
Paul Koene

A - Co



Brett Sklove
Lead counselor

Cr - Gom



Kathy Jelin

Gon - Marr



Julie Powaser

Mars- Ri



Shana Friedman

Ro-Z



Casa Grande High School
College & Career Center

College & Career Center Outreach Specialist



Valarie Alston

Bilingual office info / Oficina Bilingue

Oficina Bilingue: Español (707) 778-4770

Fax (707) 778-4687



Maria Elena Grimaldi
*Bilingual Coordinator /
Coordinadora Bilingue*

Bilingual Assistants /Asistentes Bilingues

Rosa Marazuela Yanguas
Devanie Zarco-Esquivel
Margarita Valera Arceo

American School Counseling Association (ASCA) National Standards



Happens Through:

- **Classroom Presentations**
- **Individual Support**
- **Group Activities**
- **Parent & Student Engagement**

American School Counseling Association (ASCA) National Standards



Sucede a través de:

- **Orientación en el aula**
- **Apoyo Individual**
- **Actividades en Grupo**
- **Participación de Padres y Estudiantes**

[› Overview](#)[Student Support](#)[› College & Career Center](#)[› Community Resources](#)[› Forms](#)[› Transcript Requests](#)

Welcome to Casa Grande

Explore our Small Learning Communities, vibrant Career Technical Education oppo
celebrated Advanced Placement, Arts, and Elective programs!



Hogar

Nuestra escuela

Departamentos

Programas

Asesoramiento

Estudiantes

Padres

Personal

> Visión general



> Apoyo Estudiantil

> Centro universitario y profesional

> Recursos de la comunidad

> formularios

> Solicitudes de transcripciones



It's a Great Day to Be a Gaucho!

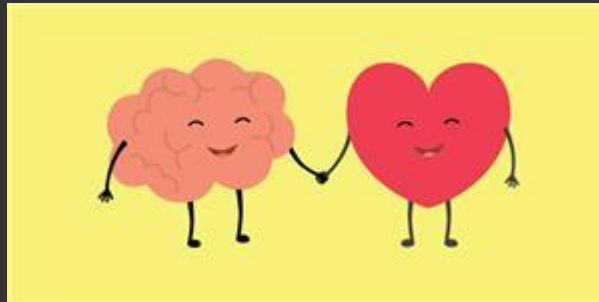


Bienvenidos a Casa Grande

¡Explore nuestras pequeñas comunidades de aprendizaje, las vibrantes oportunidades de educación técnica profesional y los célebres programas de colocación avanzada, artes y electivos!

Student Support at Casa/ Apoyando a los estudiantes en Casa

Library Mental Health Resources/Biblioteca Salud Mental
Crisis Services/Ayuda para estudiantes en crisis
Individual Counseling/Consejeria Individual
Group Counseling/Consejeria Grupal
Wellness Center/Centro de Bienestar



Sleep/Sueño

Teenagers need 8-10 hours of sleep for healthy development/Los adolescentes necesitan dormir 8-10 horas para un desarrollo saludable



Screen time negatively impacts sleep in both quantity & quality/Tiempo en pantalla impacta negativamente el sueño en ambos cantidad y calidad

Lack of sleep may lead to:

La falta de sueño puede causar:

- Moodiness/ mal humor
- Lower academic performance/bajo rendimiento académico
- Low physical activity/baja actividad física
- Acting out/portarse mal
- Anxiety/ansiedad
- Fatigue/fatiga
- Low self-esteem/baja autoestima
- Risk-taking behavior/comportamiento arriesgado
- Depression/depresión

Future Goals

**Apprenticeships
& Trade Schools**

Military

**2 Year
Community
College**

**Gap year
to work,
volunteer,
etc**

**Job Corps
AmeriCorps**

**4 Year
University**

Workforce





College and Career Services/ Servicios de Colegio y Carreras

- Provide resources and support for post-secondary plans/Recursos y apoyo para sus planes post-secundarios
 - Scholarships/ Solicitudes de becas
 - College Visits & Events/ Eventos y visitas universitarias
 - Career Exploration/ Exploración de carreras
 - Local teen jobs/ Búsqueda de empleos locales para adolescentes
 - Issue work permits//Obtener permiso de trabajo
- Jumpstart to SRJC (Santa Rosa Junior College)



SANTA ROSA
JUNIOR COLLEGE

CAL POLY

SAN LUIS OBISPO



HOLY NAMES
UNIVERSITY
Since 1868

COLLEGE OF
MARIN

Empire College
Business - Law - Technology - Medical

SONOMA
STATE UNIVERSITY



ACADEMY of ART
UNIVERSITY



U.S. AIR FORCE



U.S. ARMY



HARVARD

SAN FRANCISCO
INSTITUTE OF



ESTHETICS AND
COSMETOLOGY
PAUL MITCHELL



STANFORD
UNIVERSITY



**UNIVERSAL
TECHNICAL
INSTITUTE**

Chosen by Industry. Ready to Work.



HAMBURGER
UNIVERSITY

Graduation and Minimum College Eligibility Requirements

www.casagrandehighschool.org



OVERVIEW

- > Welcome
- + Who We Are
- > Student Support
- > College & Career Center
- > Seal of Biliteracy
- > Community Resources
- > Course Description Handbook - English
- > Course Description Handbook - Spanish
- > EL Resources
- > Forms
- + Graduation/A-G Requirements



Welcome to the Casa Grande Counseling Office
Bienvenido a la Oficina de Consejería de Casa Grande

The Counseling Department provides services to students to support their academic success. Counselors

High School Graduation & College Eligibility Requirements

PCS High School Graduation Requirements

- 220 Credits

California State University (CSU) Requirements

- A-G requirements
- Grades of "D" are unacceptable in most subject areas

University of California (UC) Requirements

- A-G requirements
- Grades of "D" are unacceptable in most subject areas
- Additional requirements

Requisitos para graduarse de la Escuela Secundaria

Requisitos para Graduarse PCS High School

- 220 Creditos

Universidad Estatal de California (CSU) Requisitos

- Requisitos A-G
- Grados “D” son inaceptables en la mayoría de las áreas temáticas

Universidad de California (UC) Requisitos

- Requisitos A-G
- Grados “D” son inaceptables en la mayoría de las áreas temáticas
- Requisitos adicionales

Suggested Education Plan/Sugerencia Plan Educativo

Education Plan to Meet 4-Year College Entrance Subject Area Requirements/Requisitos para ingresar Plan universitario de 4 años

9 TH Grade	10 th Grade	11 th Grade	12 th Grade
English 9/Ingles 9	English 10/Ingles 10	English 11/Ingles 11	English 12/Ingles 12
Physical Science/ Ciencias Físicas	Biology/Biología	Lab Science/Ciencias Laboratorio	Lab Science/ Ciencias Laboratorio
Math/Matemáticas	Math/Matemáticas	Math/Matemáticas	Math/Matemáticas
Human Interaction plus/Interacción Humana Semester Elective	World History/Historia Mundial	U.S. History/ Historia de Estados Unidos	American Government and Economics/Gobierno Americano y Economía
PE 9	PE 10	Visual or Performing Art/Visual o Artes Escénicas	College Prep Elective/Electiva de Preparación Universitaria
Language 1/Lenguaje 1	Language 2/Lenguaje2	Language 3 or other elective/Lenguaje 3 u otra electiva	Elective/Electiva

Honors or Advanced Placement courses are available in all academic subjects and usually require academic criteria for eligibility. It is encouraged that students take challenging courses throughout high school and complete at least one Honors or AP course. // Los cursos de honor o de colocación avanzada están disponibles en todas las materias académicas y generalmente requieren criterios académicos para la elegibilidad. Se recomienda que los estudiantes tomen cursos desafiantes a lo largo de la escuela secundaria y completen al menos un curso de Honores o AP.

Typical Class Schedules/Horarios Típicos de Clase

Six class periods - 0 Period is optional

Seis Periodos de Clase - Período 0 es opcional

Grade 9

English 9/ELD 1, 2, 3
Math 1 or Math 2
Physical Science/Honors Biology
Physical Education 9
Human Interaction (+ Semester
Elective)
Year Long Elective

Grado 9

Ingles 9/ELD 1, 2, 3
Matematica 1 or Matematica 2
Ciencias Física/Honores Biología
Educación Física 9
Interaccion Humana (+ Semestral
Electivo)
Año Electivo

*Students enrolled in English Language Development (ELD) have two English classes.

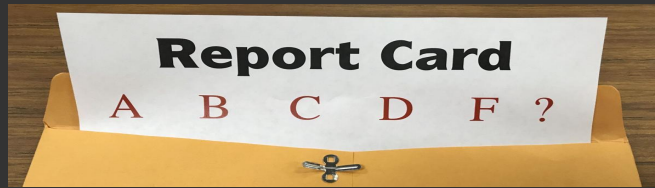
*Los estudiantes inscritos en Desarrollo del idioma inglés (ELD) tienen dos clases de inglés

GPA is Important - GPA es Importante



Freshman grades count in GPA calculation/Las Notas del Primer año cuentan para calcular el punto promedio GPA

- Athletic teams (2.0) Equipos Atléticos (2.0)
- Car Insurance (3.0+) Seguro de Carro (3.0+)
- Work Permits (2.0) Permiso de Trabajo (2.0)
- Scholarships (2.5+) Becas (2.5+)



On-Track and On Time En Camino y A Tiempo

ON-TRACK TO GRADUATION INDICATOR
A TIEMPO CON EL INDICADOR DE GRADUACIÓN

Number of "F"s earned in 9th grade/ Número de "F"s obtenidos en 9no Grado	Graduation and HS Diploma/Graduación y Diploma de Secundaria
None or 1/ Ninguno o 1	On-track
2 or more/2 o más	Off-track

Attendance Hotline

782-9055

Oficina Bilingüe

(Español)

778-4770

casagrandehighschool.org

[Home](#)

[Our School](#)

[Departments](#)

[Programs](#)

[Counseling](#)

[Students](#)

[Parents](#)

[Staff](#)

[Connect](#)



**Casa Grande
High School**

It's a Great Day to Be a Gaucha!



[DISTRICT HOME](#)

[SCHOOLS](#)

[LANGUAGE \(IDIOMA\)](#)

[WEBSITE USERS](#)



Welcome to Casa Grande

Explore our Small Learning Communities, vibrant Career Technical Education opportunities, and celebrated Advanced Placement, Arts, and Elective programs!

Key website information-Informacion Sitio Web

- Upcoming Events / Próximos Eventos
- AM Announcements / Anuncios en la mañana
- Programs / Programas
- Counseling / Consejería
- Athletics / Atletismo
- Student Info / Información para Estudiantes
- Parent Info / Información para Padres
- Calendar / Calendario

Counseling Website information

Información Sitio Web Consejería

- **Course Description Handbook / Manual Descripción de Cursos**
- **Graduation and A-G College Eligibility Requirements/ Requisitos de graduación y elegibilidad de A-G Universitario**
- **Honors and AP Class Info / Información de Honores y Clase AP**
- **College Planning Checklist / Lista de planificación Universitaria**
- **College and Career Center updates (Scholarships! \$\$\$) / Actualizaciones de Carrera y Universidad (Becas, \$\$\$)**
- **Forms (HI Waiver, Community Service Verification, Letter of Recommendation, PE Exemption Request, etc.) / Formas (Omisión HI, Verificación Servicio Comunitario, Carta de Recomendación, PE 10 exención)**

PE 10 Exemption/PE 10 Exención

What you need to know in 9th grade:/Qué debes saber en 9no Grado:

**Earn C's or higher in PE 9, both semesters/
Obtenga C o más en PE 9**

Complete the *Fitnessgram* tests/Completa las pruebas de *Fitnessgram*

Participate in a Casa sport in 10th and/or 11th grade / Participar en un deporte de Casa en 10 y/o 11 Grado

Freshman and senior year sports DO NOT count

Upcoming dates - *Fechas importantes*

Round-Up Days (pictures, school ID, ASB sticker, etc)

August 9, 10, 14, 9am-3pm

First Day of School

**Wednesday, Aug 16, "C" Day
*student dismissal at 3:20 PM***

Carnival de Casa and Back To School Night

Wednesday, September 6

A collection of black graduation caps with gold tassels is scattered across a clear blue sky. The caps are in various orientations, some with tassels pointing down and others with tassels pointing up. The tassels are long and made of many thin strands of gold thread. The overall scene is bright and celebratory.

**Four years pass in a
BLINK!**

STAY CONNECTED



EMAIL teachers,
counselors, administrators,
and staff.

FOLLOW

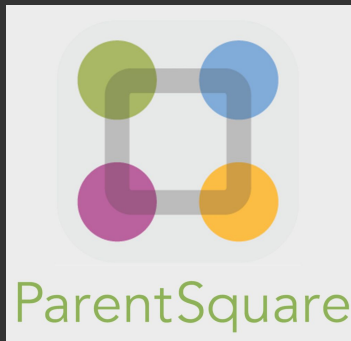
@casagrandehighschool

College & Career Center

@cghscollegecareer

Student Leadership

@casagrandeasb



ParentSquare

Group notifications from
teachers, counselors,
CGHS admin and staff

QUESTIONS?/¿PREGUNTAS?



Thank you!
¡Gracias!

Student Last Name	Counselor	Email
A - Co	Paul Koene	pkoene@petkl2.org
Cr - Gin	Brett Sklove	bsklove@petkl2.org
Gio - Marr	Kathy Jelin	kjelin@petkl2.org
Mars - Ri	Julie Powaser	jpowaser@petkl2.org
Ro - Z	Shana Friedman	sfriedman@petkl2.org



QUESTIONS?/¿PREGUNTAS?

Thank you!
¡Gracias!

Who is my Counselor?

A-Co

Paul Koene

pkoene@petk12.org

Cr-Gom

Brett Sklove

bsklove@petk12.org

Gon-Marr

Kathy Jelin

kjelin@petk12.org

Mars-Ri

Julie Powaser

jpowaser@petk12.org

Ro-Z

Shana Friedman

sfriedman@petk12.org